


**FACT SHEET**

# RWD Insights, powered by STATinMED

Our real-time data source that encompasses more than 80% of the US healthcare system with all-payer medical and pharmacy claims. The insights deliver deeper, more accurate information to shape initiatives to reduce burden for patients.

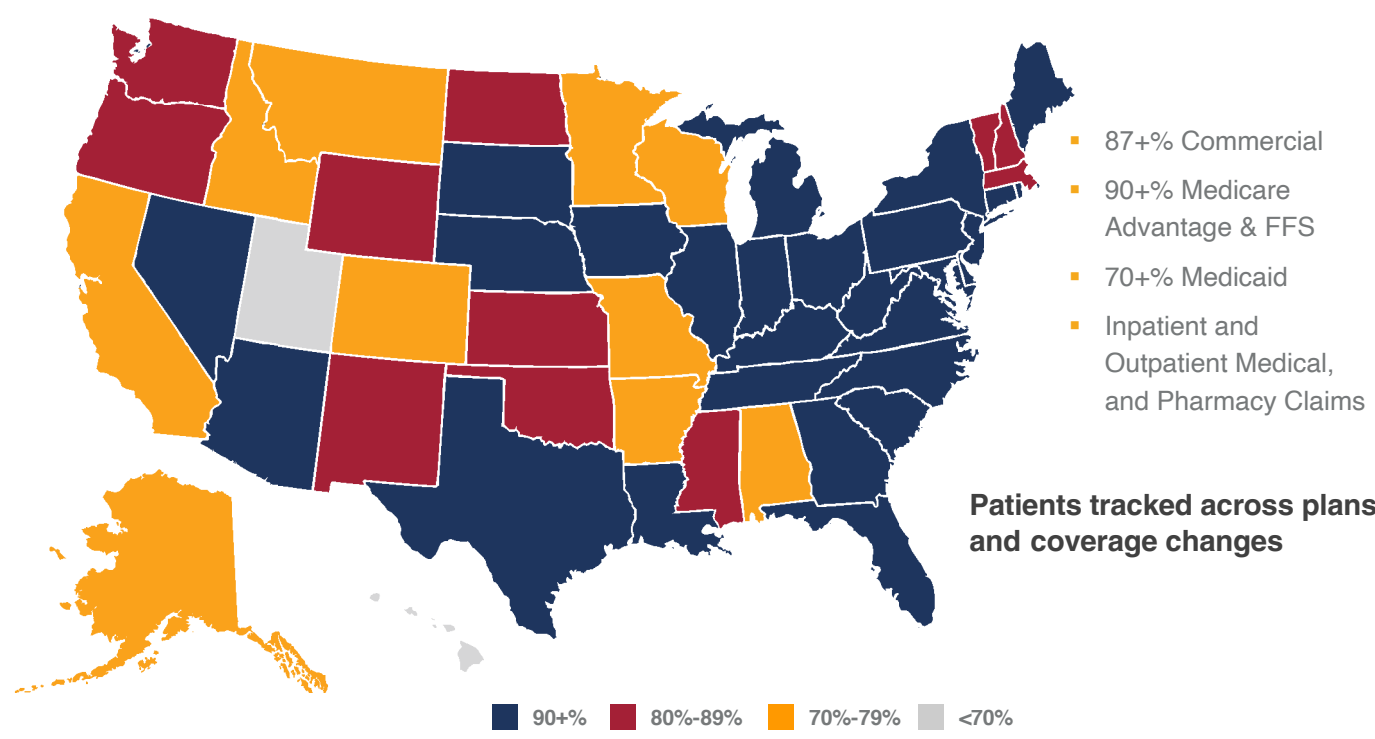
<p><b>REAL-TIME DATA</b></p> <p>Repository from 2014 to most current quarter (1-month data lag)</p>	<p><b>CARE SETTINGS</b></p> <p>Longitudinal tracking across data sources, pharmacy, and sites of care</p>	<p><b>NATIONAL REACH</b></p> <p>Patients from all US geographic regions including HI, AK, and Puerto Rico</p>
<p><b>RAPID ACCESS</b></p> <p>No delay or interruption with data access and project kick-off in 1 week</p>	<p><b>PATIENT UNIVERSE</b></p> <p>300 million unique patients, de-identified, tokenized, and HIPAA-compliant</p>	<p><b>CHANNEL CAPTURE</b></p> <p>Commercial, Medicare FFS and Advantage, and Medicaid for all 50 states</p>
<p><b>PATIENT TRACKING</b></p> <p>Track patients across health plans and coverage changes</p>	<p><b>PAYER DETAIL</b></p> <p>In-depth visibility into payer account details at transaction level</p>	<p><b>PROVIDERS &amp; Rx</b></p> <p>97% HCP specialties; full life cycle of pharmacy and Rx claims</p>



**COMPLETE REPORTING OF OUTCOMES**  
In addition to working with traditional claims and data sources in the US commercial and government spaces, STATinMED actively explores current and relevant sources to offer the most complete reporting of outcomes.

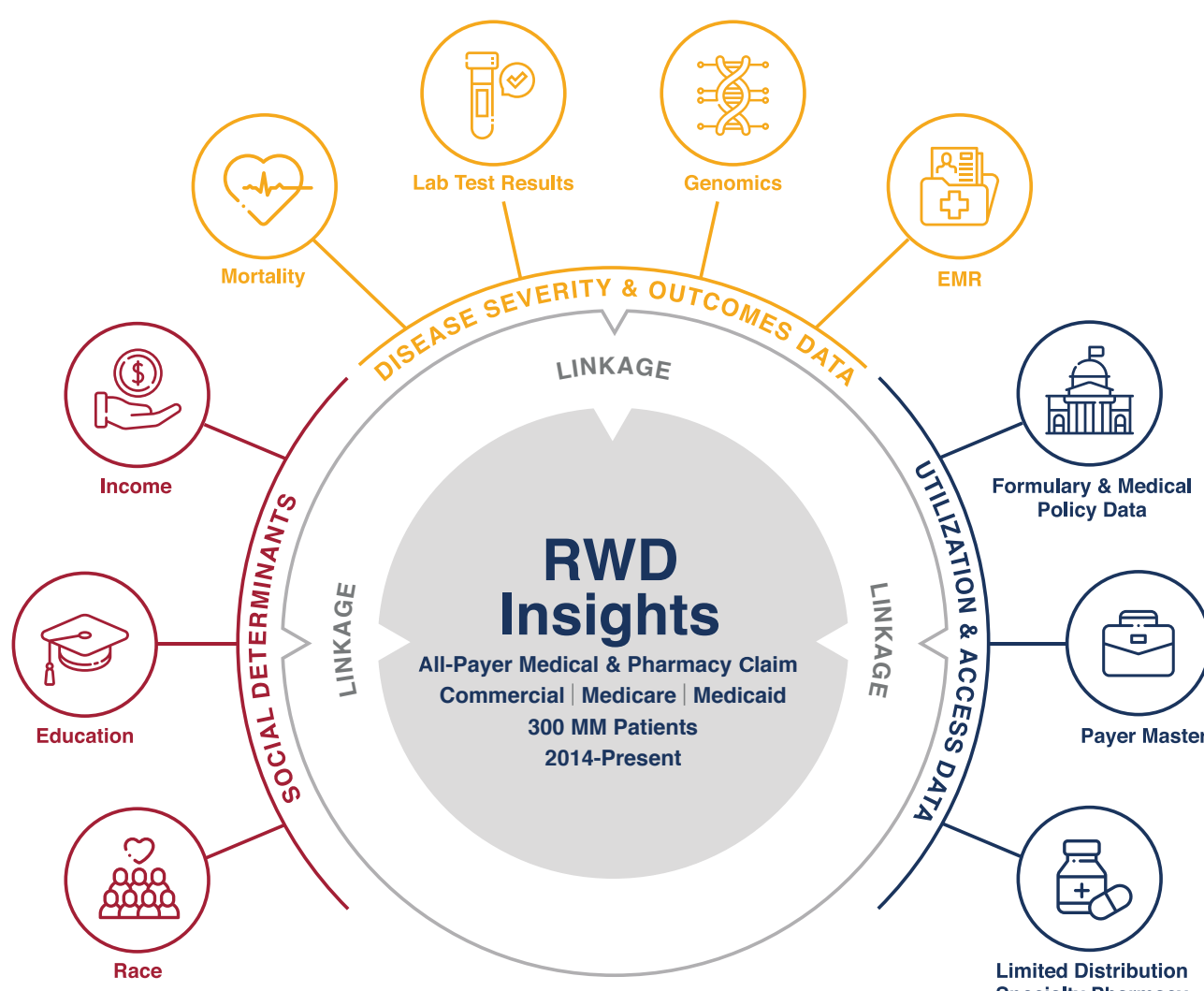
## Coverage and Capture

Our heat map diagrams present national data on a variety of categorical variables to tell a clear geographic story.



## Our Proven Approach

Our advisory and linkage services help clients develop the ideal data lake, sourced with curated data that is aligned with research goals.



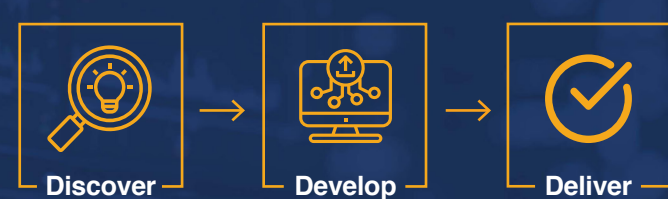
## Realize maximum value through our data, insights, and solutions.

<p><b>DISCOVER</b></p> <ul style="list-style-type: none"> <li>Differentiated market share for a multi-indication product</li> <li>Geographic-specific variations and other categorical variables about the total addressable market</li> <li>Influential and clinically appropriate providers and early adopters within an HCO</li> <li>Payer access structures impact patient resource utilization and behaviors</li> </ul>	<p><b>VALUE</b></p> <ul style="list-style-type: none"> <li>Leverage insights for the indication-specific contract negotiations</li> <li>Identify clinically eligible lives to inform data-driven decision-making and account prioritization</li> <li>Use IDN/HCO-HCP insights to identify high-opportunity providers to support field teams</li> <li>Understand the impact of utilization management practices and adherence to support value-based care</li> </ul>
--	---

HCO: Health Care Organization; HCP: Health Care Professionals; IDN: Integrated Delivery Network

<p>“The amazing research collaboration between STATinMED and our team has already led to a comprehensive body of evidence to inform confident decision-making for many patients.”</p> <p><b>Joint Partnership Alliance, Real-World Evidence Executive</b></p>	<p>“On behalf of the study team, I would like to thank you all for your tremendous help on the study. Acceptance by <i>Stroke</i> is a watershed moment for the Real-World Data program.”</p> <p><b>Global Biopharmaceutical Company, Real-World Evidence Executive</b></p>	<p>“Thanks to the entire STATinMED team for all of your hard work and support with many projects – especially for the countless hours, expertise, and thoroughness on recent projects.”</p> <p><b>Global Biopharmaceutical Company, Market Access Executive</b></p>
---	---	---

## About STATinMED



**It's what we do best with RWD.**

Our approach and data offerings are foremost in the industry based on hundreds of combined experience years and 1000+ peer-reviewed publications in dozens of therapeutic areas.

[STATinMED.COM](https://STATinMED.COM) | [info@STATinMED.COM](mailto:info@STATinMED.COM)